

CCIE RACK RENTALS



CCIE Rack Rentals for

Collaboration

Security

Wireless

Datacenter

Service Provider

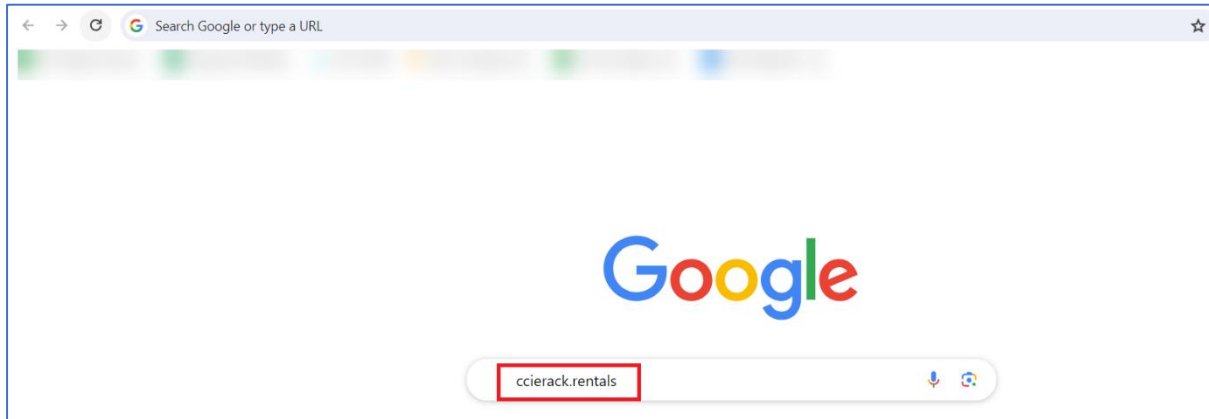
Enterprise Infrastructure

www.ccierackrentals.com

USER GUIDE

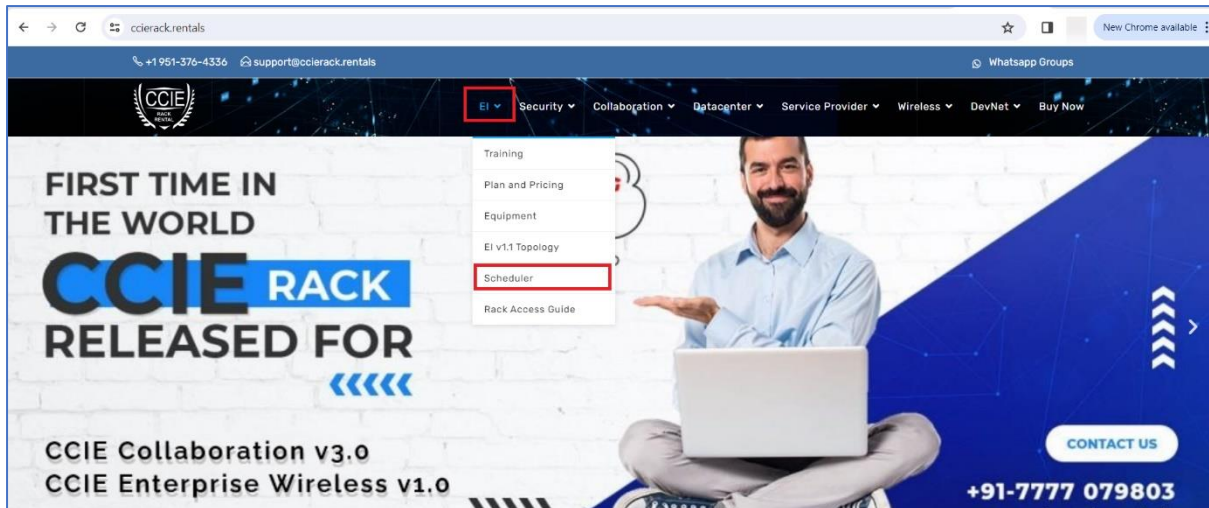
CCIE ENTERPRISE VER 1.1 WORLD FIRST REAL LAB RACK

STEP 1: Open a Web Browser And Type www.ccierack.rentals

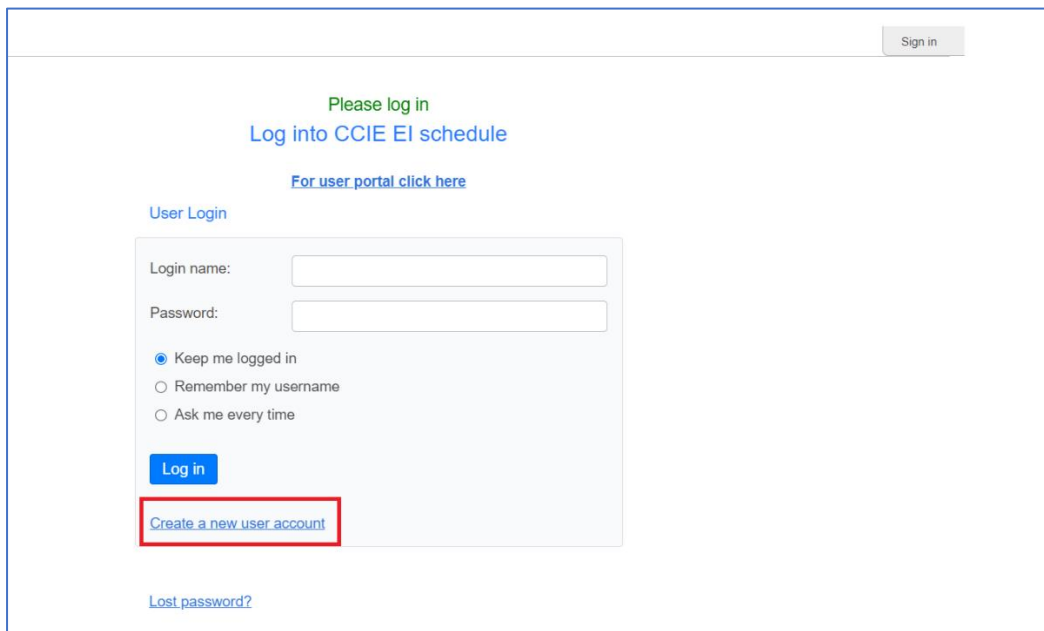


STEP 2: Select Your Respective Track

Go to "Scheduler"



STEP 3: Go To Create a New User Account



Sign in

Please log in
Log into CCIE EI schedule

[For user portal click here](#)

User Login

Login name:

Password:

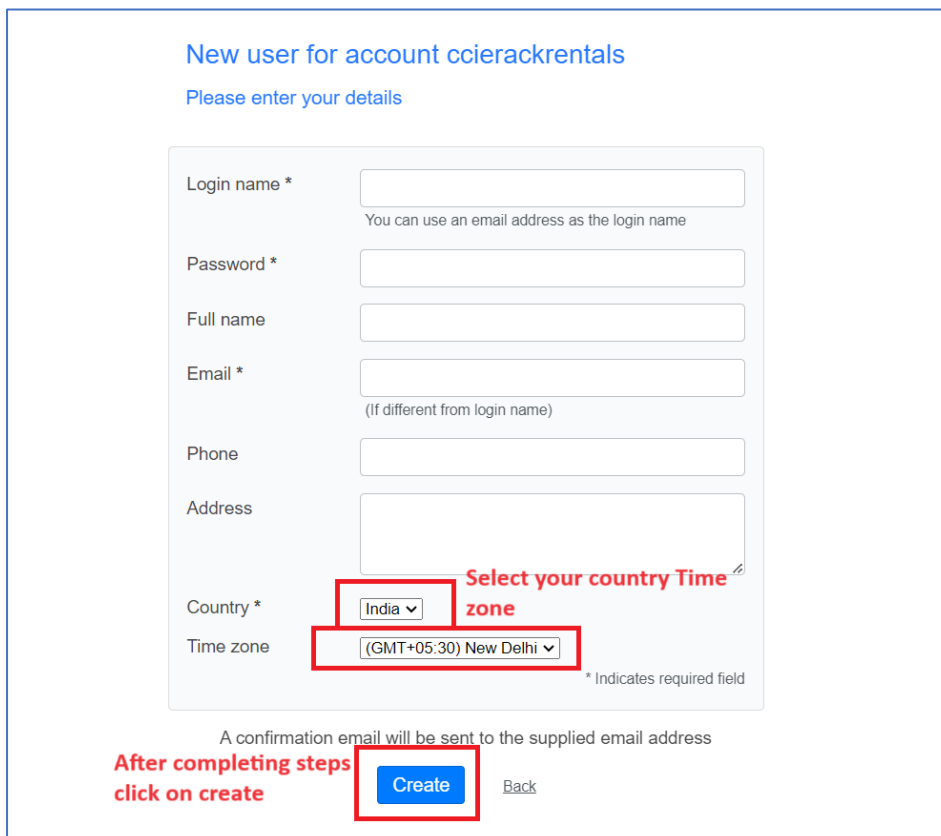
Keep me logged in
 Remember my username
 Ask me every time

Log in

Create a new user account

[Lost password?](#)

STEP 4: Fill Your All Details



New user for account ccierackrentals

Please enter your details

Login name *
You can use an email address as the login name

Password *

Full name

Email *
(If different from login name)

Phone

Address

Country * **Select your country Time zone**

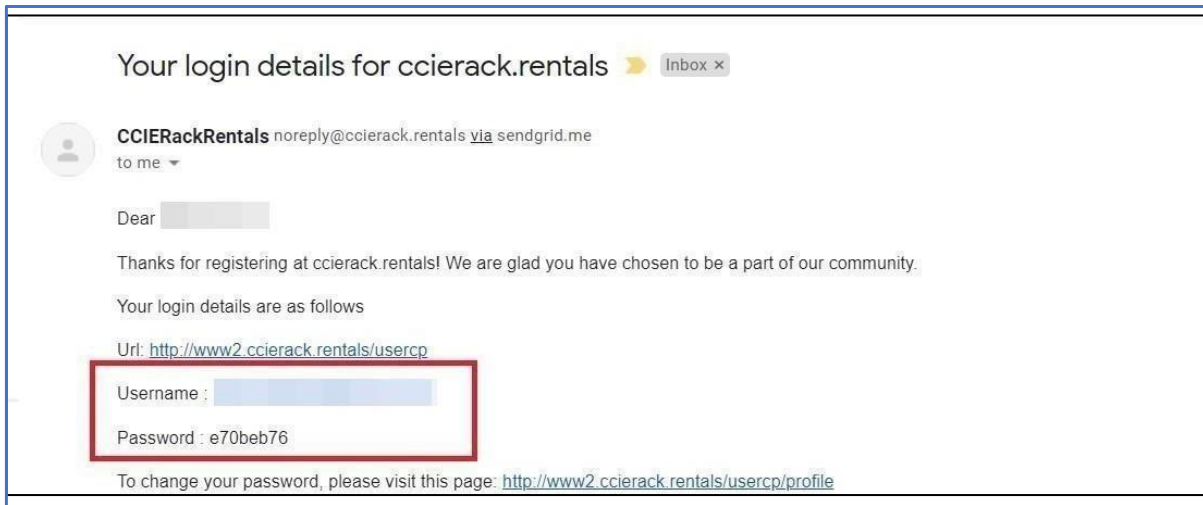
Time zone * Indicates required field

A confirmation email will be sent to the supplied email address

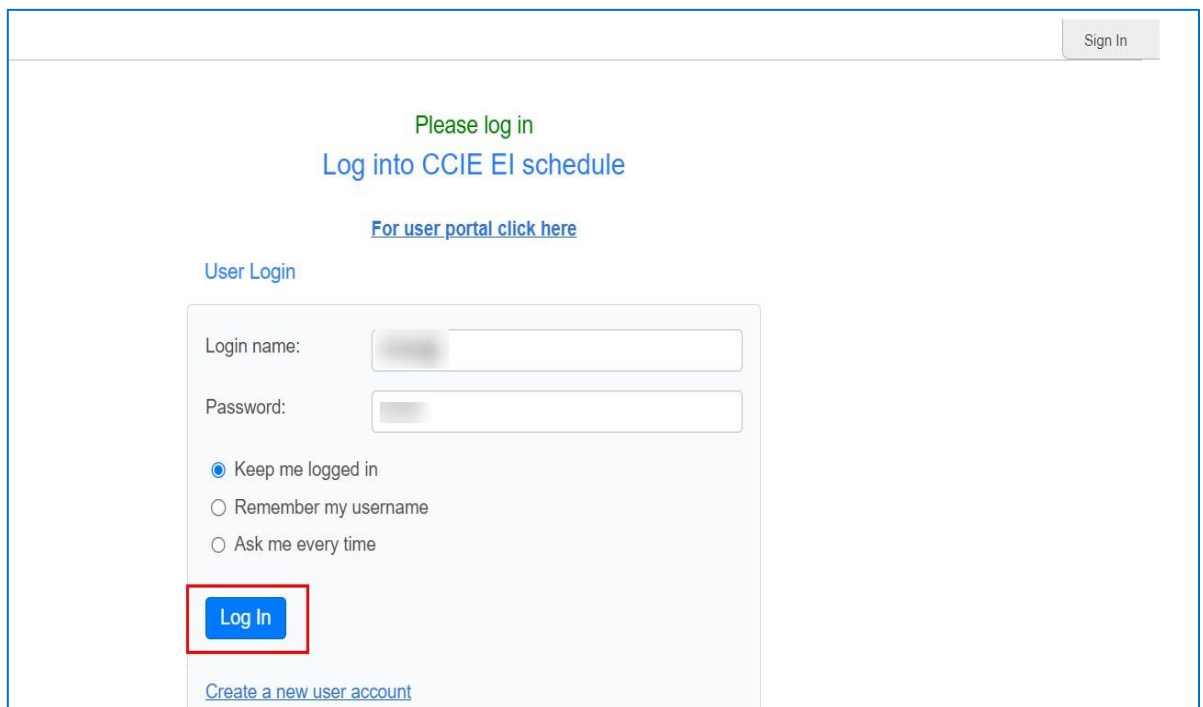
After completing steps click on create

Create [Back](#)

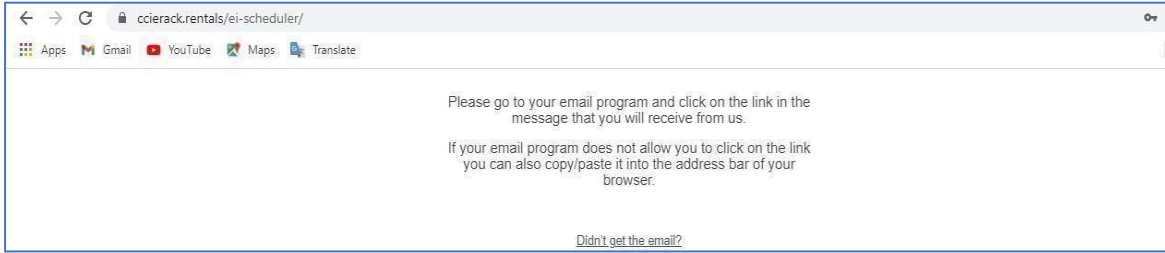
STEP 5: Go to your mail and in See your login details that you will receive from us.



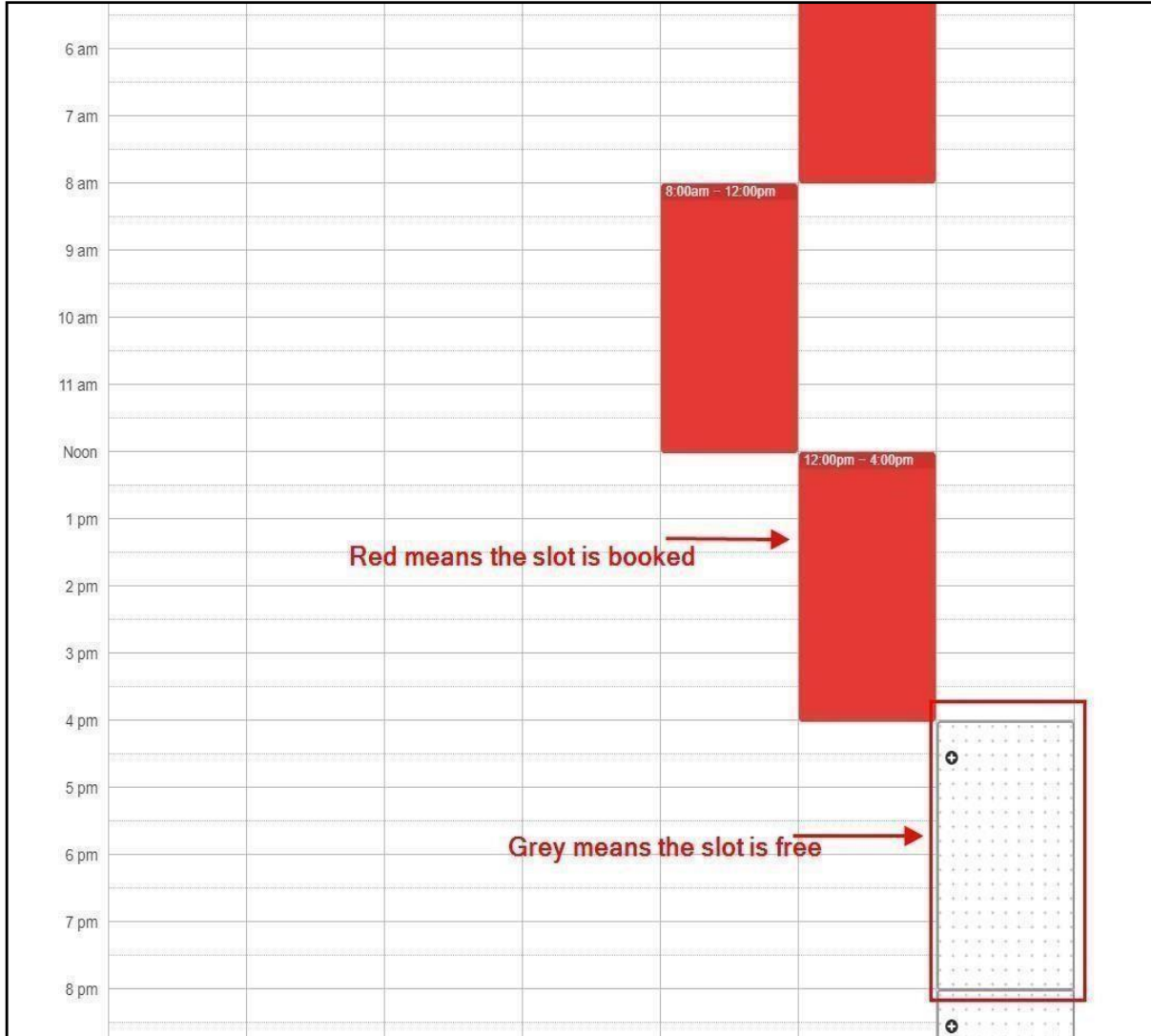
STEP 6: Go to Login and enter your Login name and Password and click on Login



Note: If not received mail click on "Didn't get the mail"



Below is the Scheduler Page



The screenshot displays the scheduler interface for Sunday, 6 June 2021. At the top, there is a navigation bar with a link to the user portal, a date selector (Sun 6/6), and view options (Month, Week, Day, Agenda, Available). A calendar on the right shows the current date highlighted. A 'New Reservation' modal form is open, showing the following details:

- When:** 6/6/2021 4:00am to 6/6/2021 12:00pm (with a selected slot of 2:30pm IST to 10:30pm IST).
- Full name *:** Naeem Khan
- Email *:** naeemkhan896@gmail.com
- Phone:** (empty field)
- Coupon Code:** (empty field)
- Length *:** Eight hours 480 Minutes 60 credits (dropdown menu)
- Price:** 60 credits

Annotations on the screenshot include:

- An arrow pointing to the 'Click Here to Login to User Portal' link.
- An arrow pointing to the view options (Month, Week, Day, Agenda, Available) with the text 'From here you can change the view of scheduler'.
- An arrow pointing to the '2:30pm IST' time slot in the 'When' field with the text 'This will be your time as per your timezone'.
- An arrow pointing to the 'Length' dropdown menu with the text 'From here you can select for how many hours you want to book the rack'.
- An arrow pointing to the 'Create Reservation' button with the text 'Click here to make the reservation'.
- A text box on the right stating: 'In this screen i am booking a slot from 2.30pm IST to 10.30pm IST (8 hours)'.

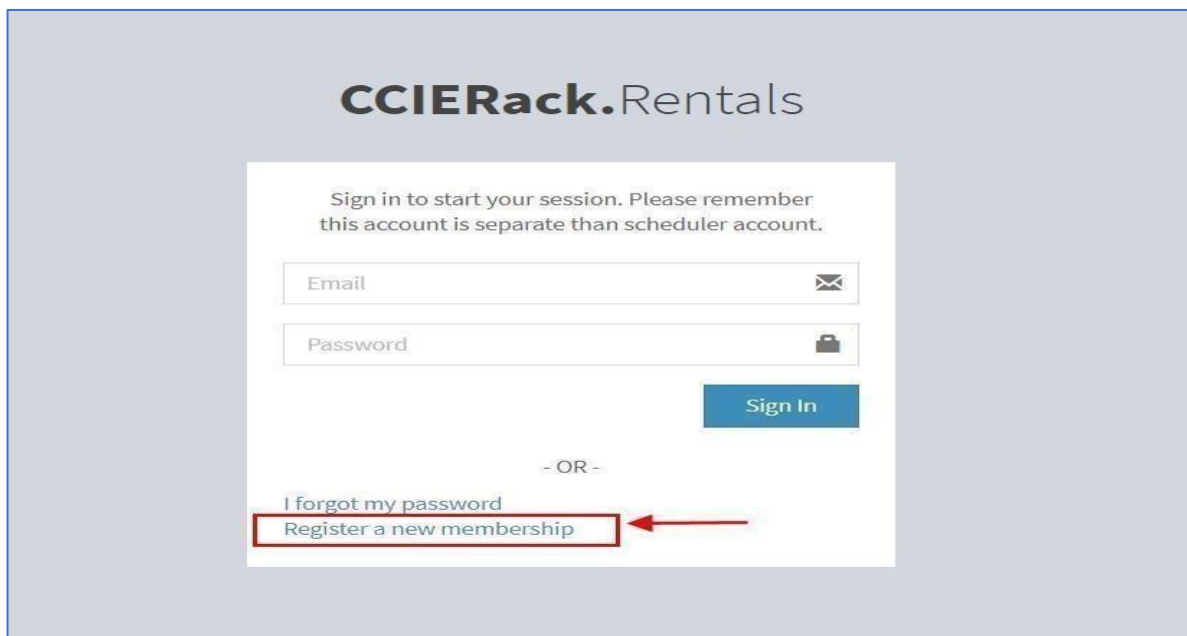
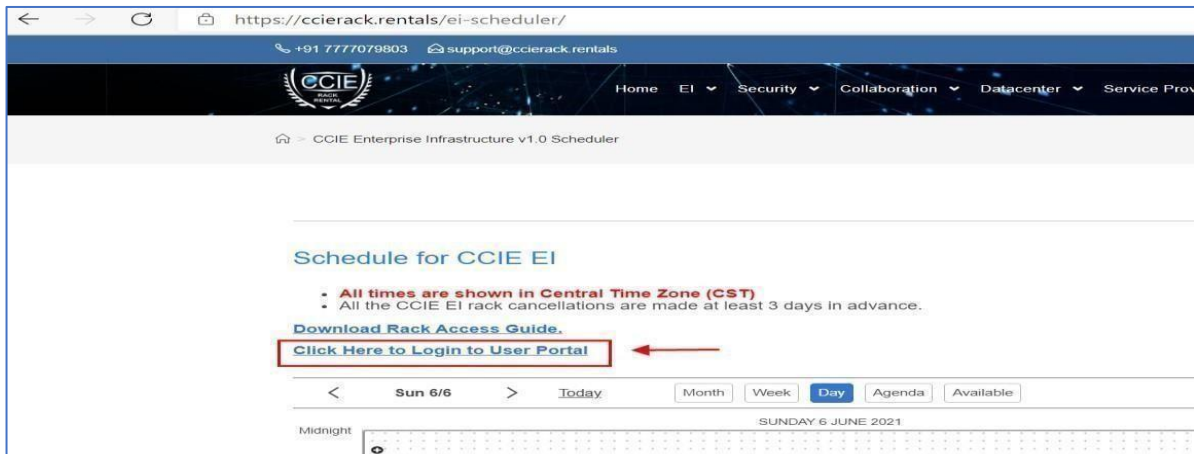
From above screen you can see how to book the RACK

After Creating reservation click on "Click here to Login to User Portal"

Important Note: Until and unless, you won't reserve the rack you will not able to create the User Portal Membership Kindly note: Scheduler account is different than User portal account.

You have to create new user portal account

On the User portal Create an account if you don't have



Once you create a "New Membership" then come to the above page again and Sign in with your details you can see your reservations and login details for the rack after you sign in



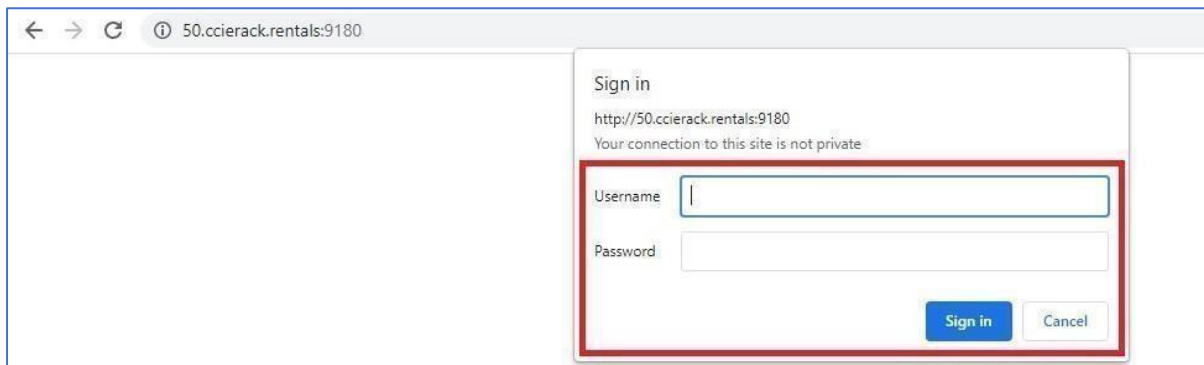
Now to access the rack on your scheduled time please follow below steps:

STEP 1: In browser type a URL

URL for Rack

RACK	Primary URL
Rack 1	http://oreo.ccierack.rentals:9180/
Rack 2	http://oreo.ccierack.rentals:9280/
Rack 3	http://oreo.ccierack.rentals:9380/
Rack 4	http://oreo.ccierack.rentals:9480/
Rack 5	http://oreo.ccierack.rentals:9580/

STEP 2: Once you open the above link you will be asked for Username/Password



STEP 3: After login you will get a web page as below, Click on Submit and wait for 5 mins

Note: Once Login



STEP 4: After 5 mins click on “Click here to Start RDP”, an RDP will get downloaded in the browser

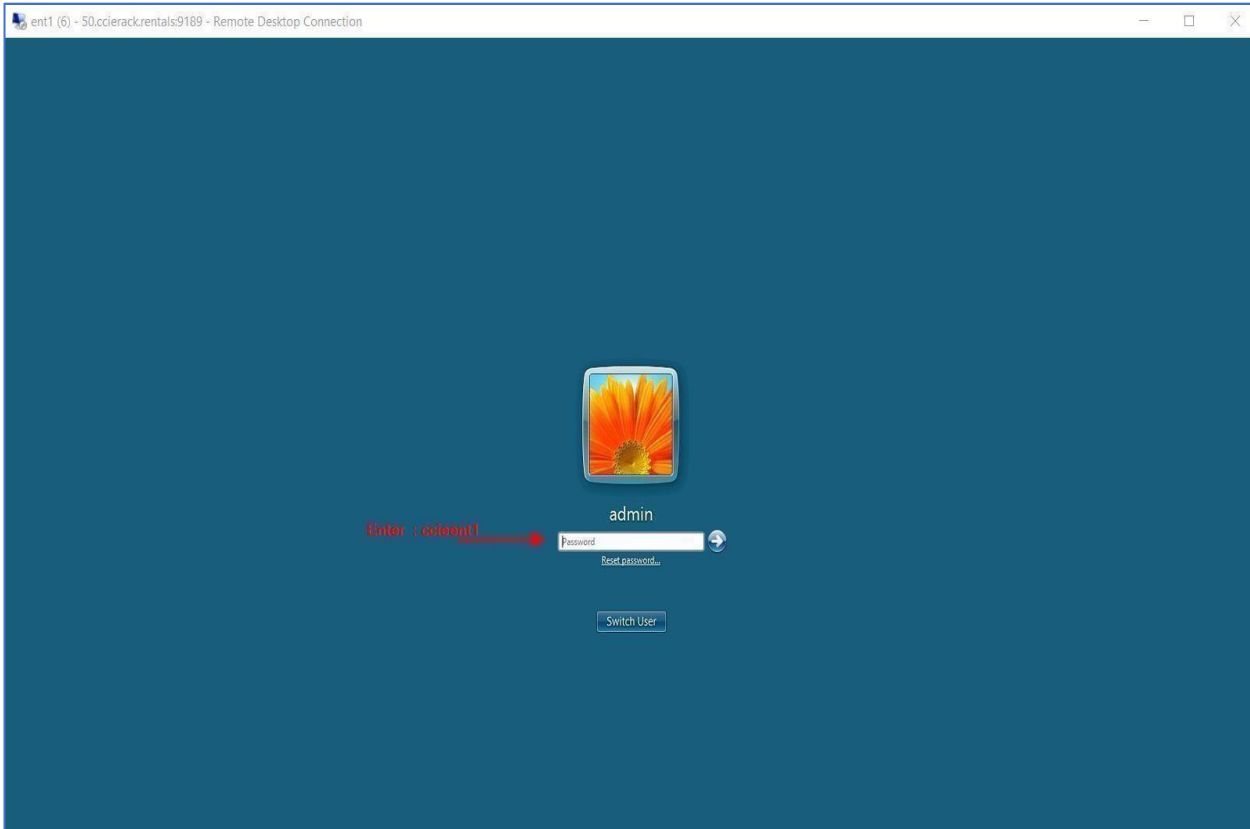


you click on to Submit it will Restore the VM to Pre-configs

STEP 5: Open RDP by clicking on it

Once RDP is open you will be asked for Login Rack 1 to Admin, admin password is “ccieent1” (without coats)





Admin Password: Rack 1: ccieent1, Rack 2: ccieent, Rack 3: ccieent1, Rack 4: ccieent

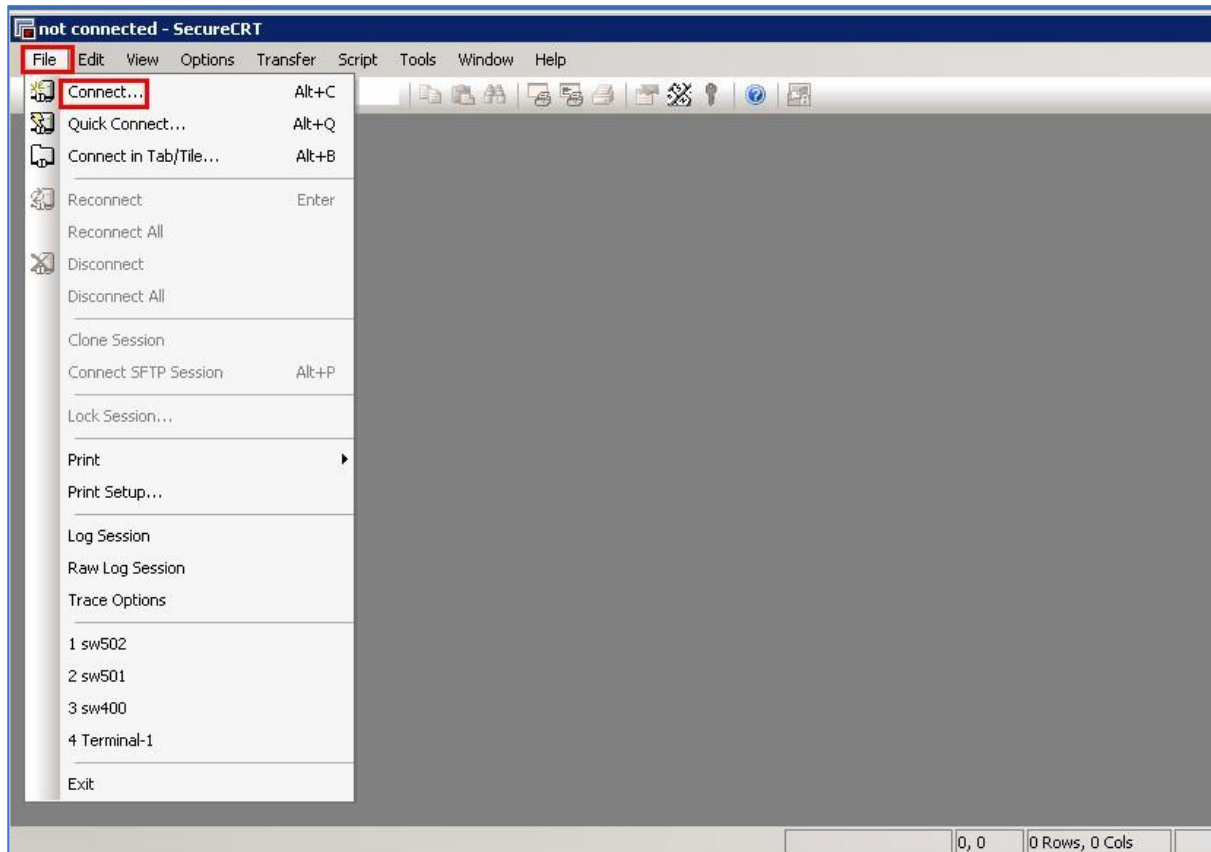
RACK	Admin Password
Rack 1	ccieent1
Rack 2	ccieent
Rack 3	ccieent1
Rack 4	ccieent
Rack 5	ccieent1

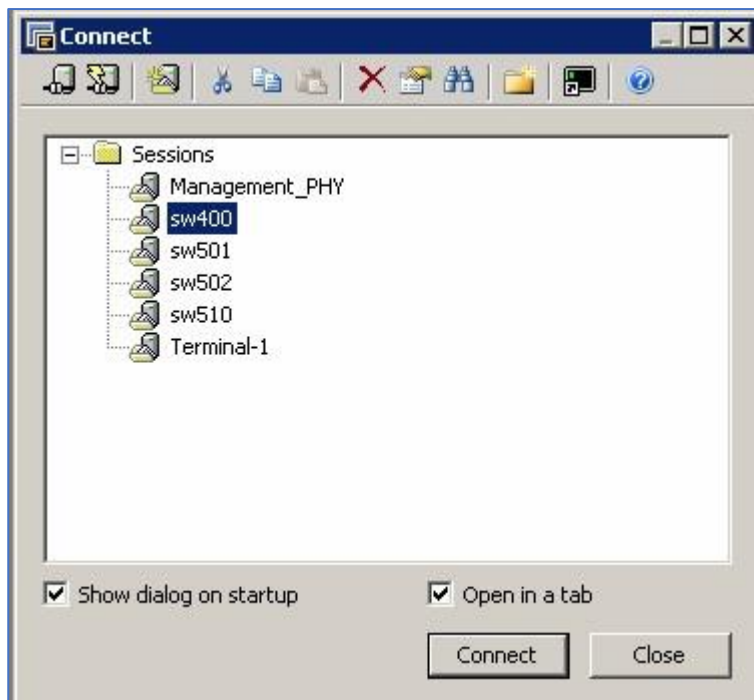
How to copy base config on Physical Switches

>Erase start-up config switches 400,501,502,510

>Then reload switches 400,501,502,510

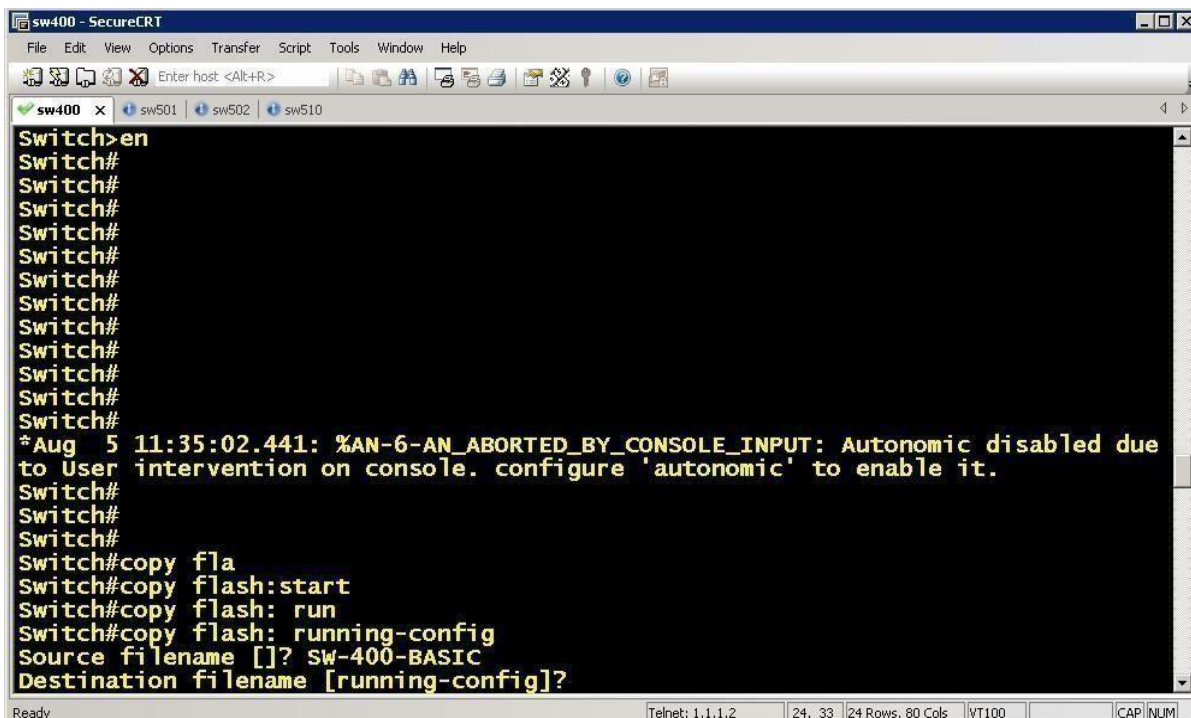
Open Secure CRT

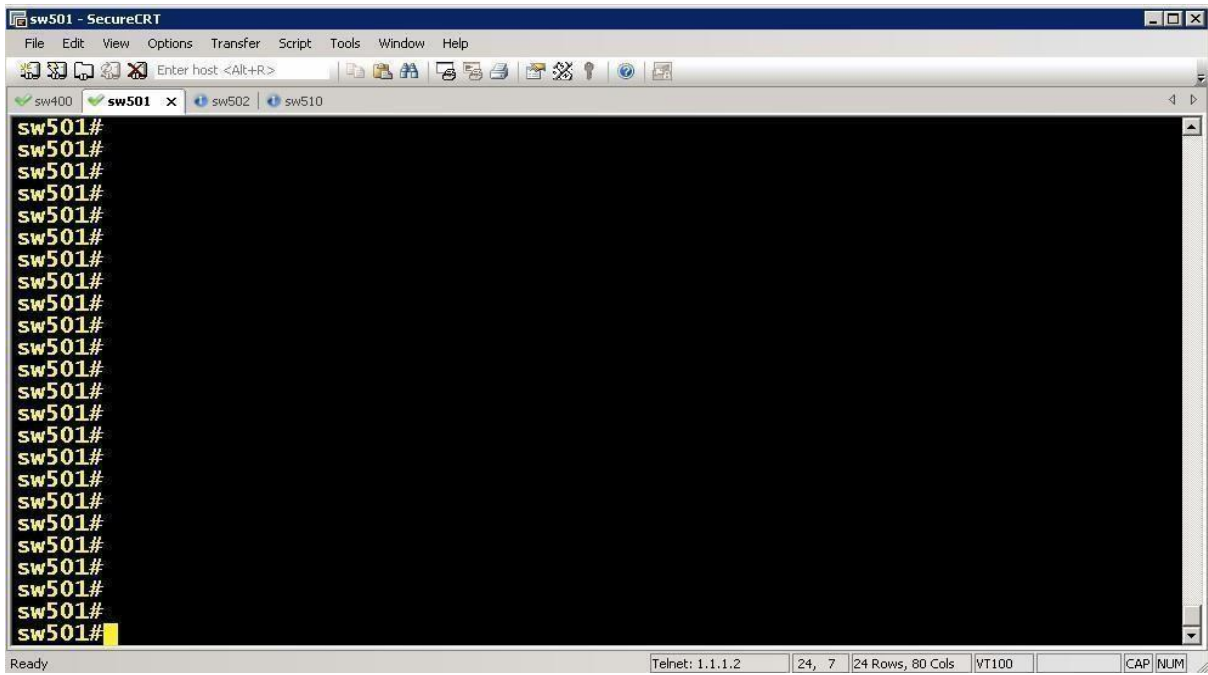




SW400:

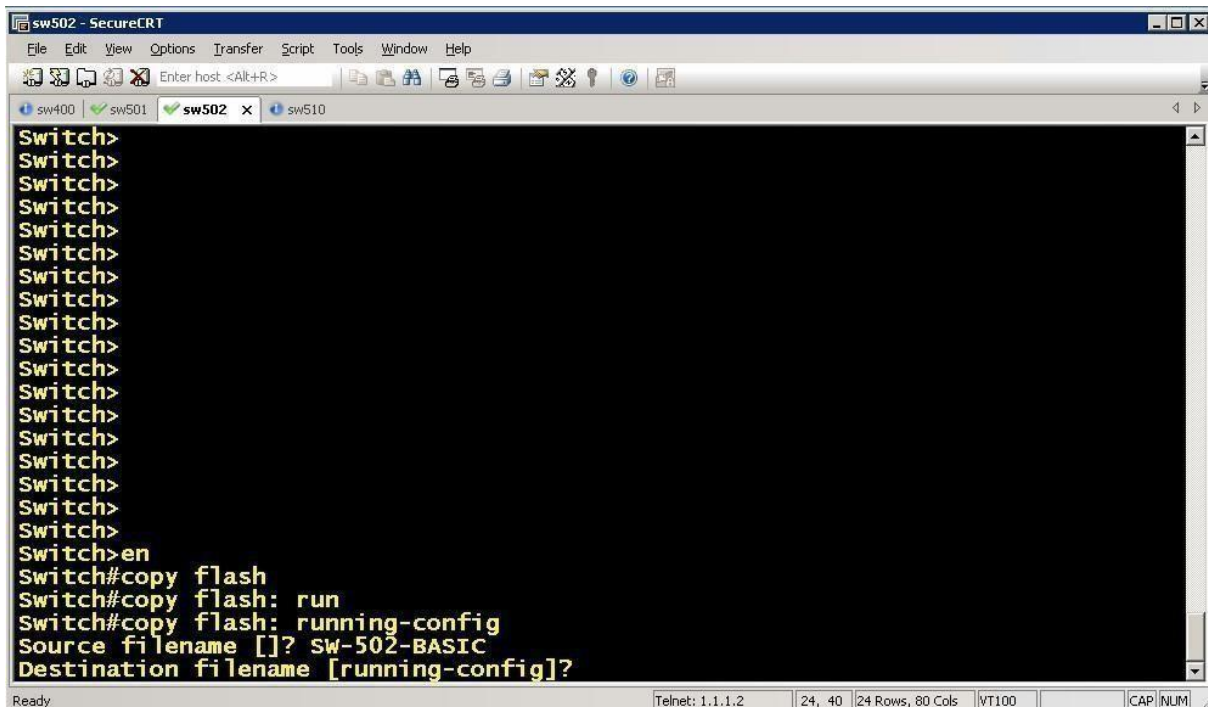
Under Enable mode enter command to copy the Base config from Flash copy flash:
running-config source filename []? SW-400-BASIC

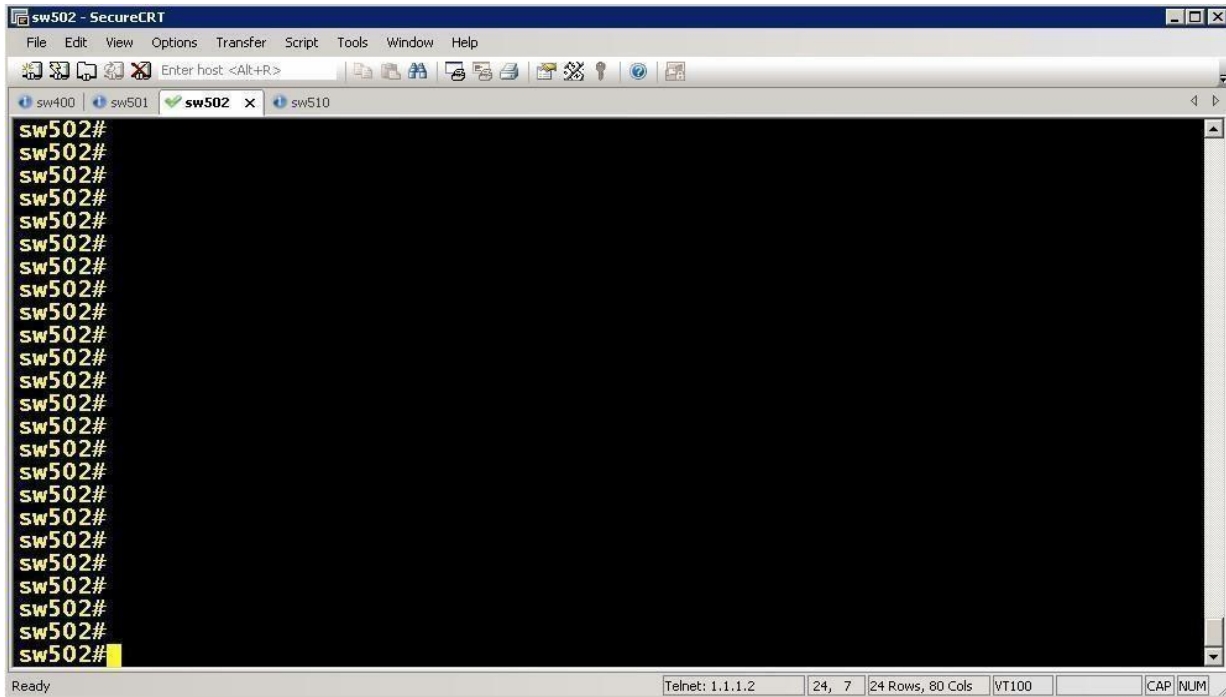




SW502:

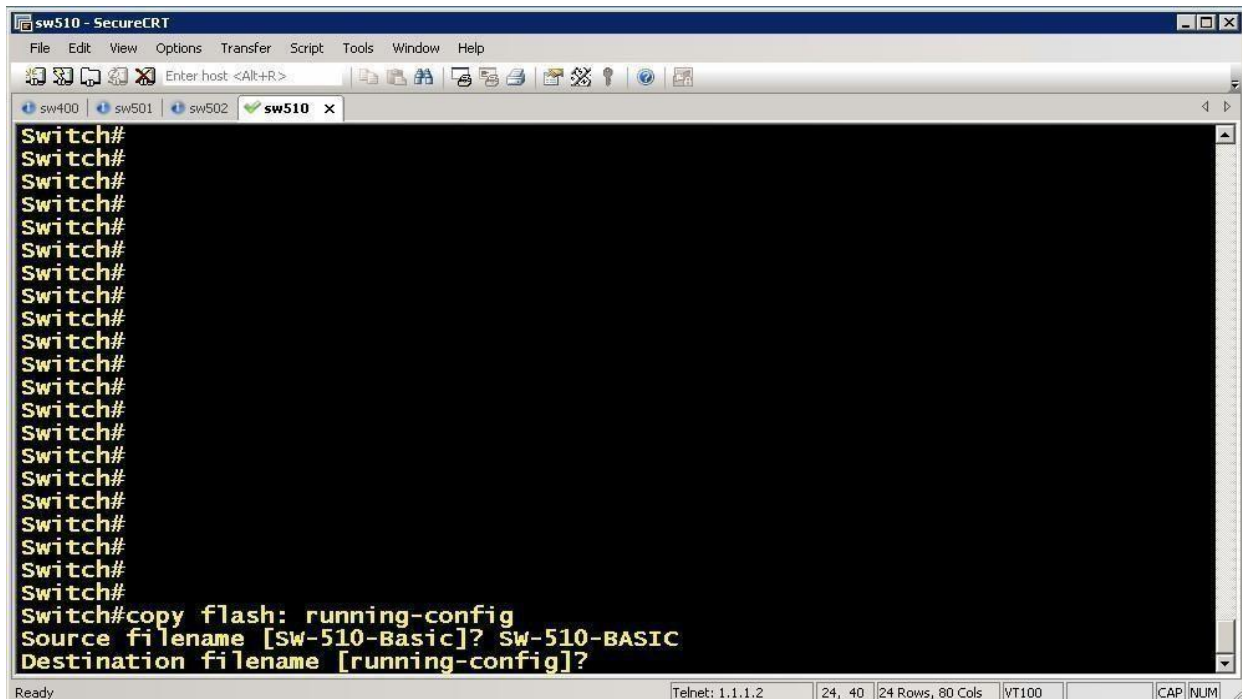
Under Enable mode enter command to copy the Base config from Flash copy flash: running-config source filename []? SW-502-BASIC Destination filename [running-config]?

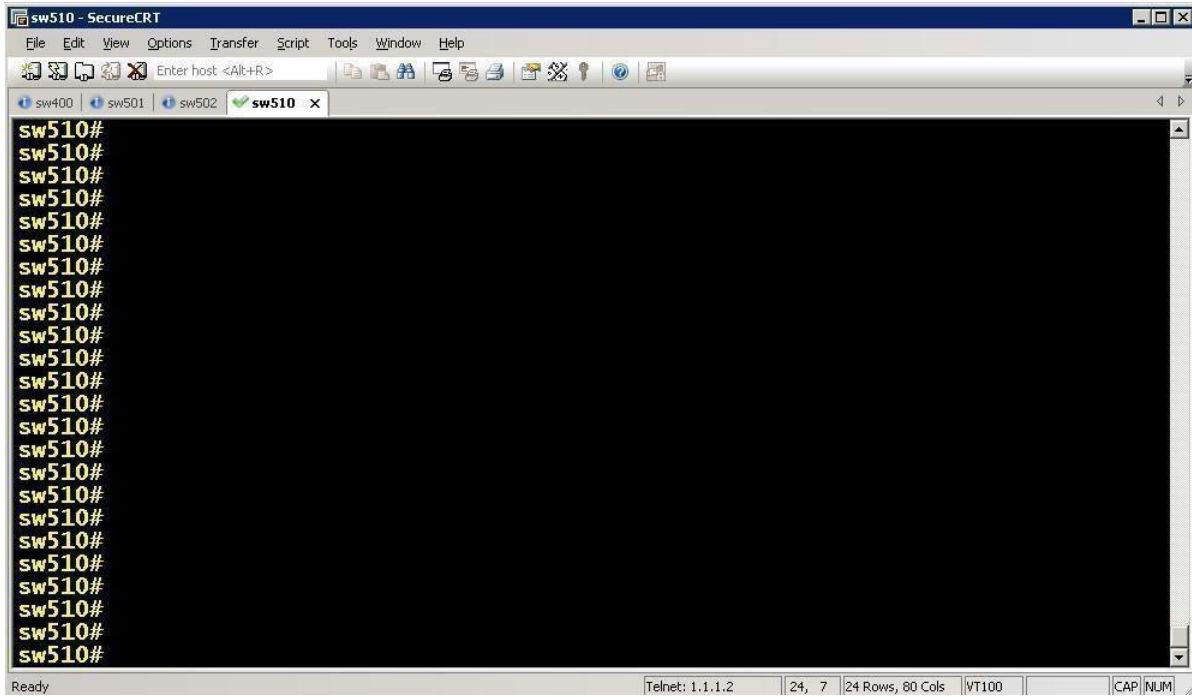




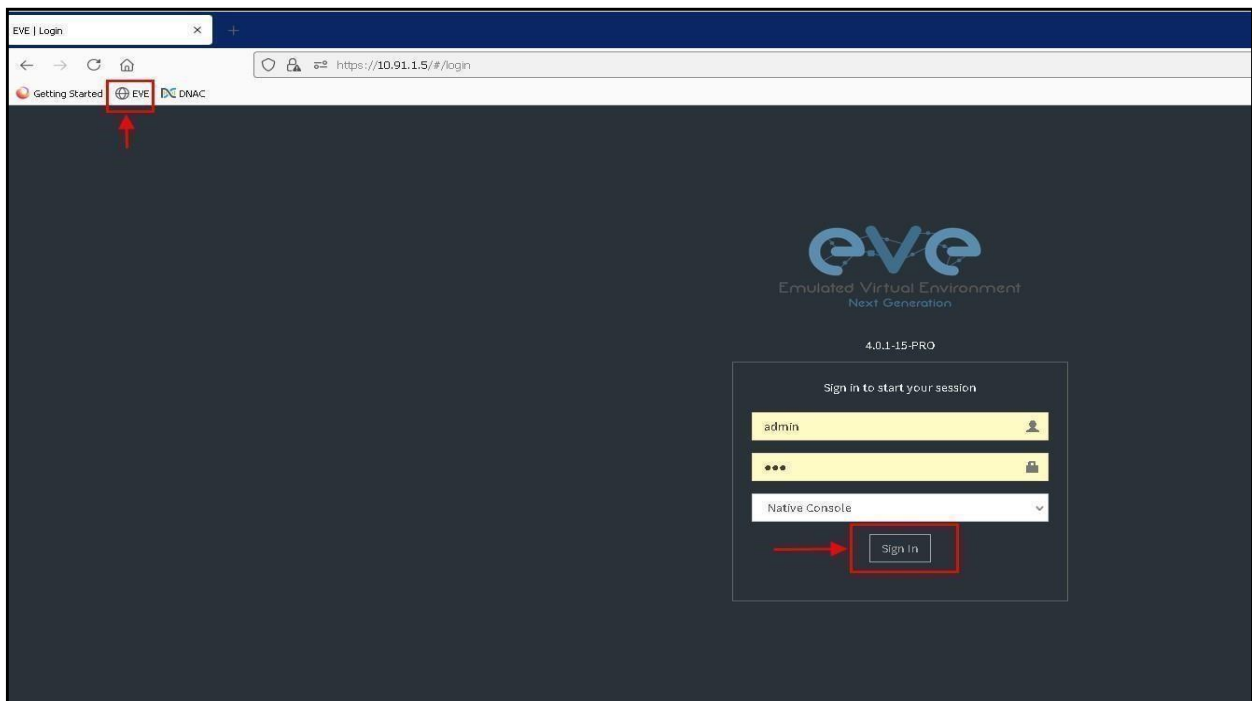
SW510:

Under Enable mode enter command to copy the Base config from Flash
copy flash: running-config source filename []? SW-510-BASIC
Destination filename [running-config]?





Step 6: Once you are in the Server, Open Firefox > click on EVE bookmark > Sign In



NOTE: "DO NOT WIPE SDWAN DEVICES IN EVE"

You are now Good to access the RACK!!!!

Rack 2:

Device Login Credential's: If any device in EVE have enable password enter "pel" (without coats).

Physical Switches:

<u>Switches</u>	<u>Username</u>	<u>Password</u>
<u>SW400</u>	<u>CCIE</u>	<u>Admin1234</u>
<u>SW501</u>	<u>CCIE</u>	<u>Admin1234</u>
<u>SW502</u>	<u>CCIE</u>	<u>Admin1234</u>
<u>SW510</u>	<u>CCIE</u>	<u>Admin1234</u>

DNAC:

<u>Username</u>	<u>Password</u>	<u>IP</u>
admin	CC!E!nfr4	<u>10.2.254.11</u>

NOTE: "DNA" GUI will come after 40-45 minutes once you click on submit

Other Devices Credentials:

<u>Devices</u>	<u>Username</u>	<u>Password</u>	<u>IP</u>
<u>Vmanage</u>	<u>admin</u>	<u>admin123</u>	<u>10.2.253.11</u>
<u>Vbond</u>	<u>admin</u>	<u>admin</u>	<u>10.2.250.11</u>
<u>Vsmart</u>	<u>admin</u>	<u>admin</u>	<u>10.2.251.11</u>
<u>Cedge</u>	<u>admin</u>	<u>admin123</u>	-
<u>ISE</u>	<u>admin</u>	<u>CC!E!nfr4</u>	<u>10.2.252.11</u>

NOTE: "Vmanage", "ISE" GUI will come after 20-30 minutes once you click on submit

Clear line command for Rack

Rack 1

Clear line 33	Sw400
Clear line 34	Sw501
Clear line 35	Sw502
Clear line 36	Sw510
Clear line 37	Mgmt sw

Rack 2

Clear line 66	Sw400
Clear line 67	Sw501
Clear line 68	Sw502
Clear line 69	Sw510
Clear line 70	Mgmt sw

Rack 3

Clear line 66	Sw400
Clear line 71	Sw501
Clear line 68	Sw502
Clear line 69	Sw510
Clear line 70	Mgmt sw

Rack 4

Clear line 34	Sw400
Clear line 35	Sw501
Clear line 36	Sw502
Clear line 37	Sw510
Clear line 38	Mgmt sw

Rack 5

Clear line 74	Sw400
Clear line 75	Sw501
Clear line 76	Sw502
Clear line 77	Sw510
Clear line 78	Mgmt sw

NOTE: For any issue related to Rack contact ccierack.rentals on [skype](#) or message in your sales group

Our other products which you might be interested in

For CCIE Routing & switching Labs 🔗 www.ccieenterpriselabs.com (CEL)

For CCIE Security Labs 🔗 www.passecuritylabs.com (PSL)

For CCIE Wireless Labs 🔗 www.passwirelesslabs.com (PWL)

For CCIE Data Center Labs 🔗 www.passdatacenterlabs.com (PDL)

For CCIE Collaboration Labs 🔗 www.passcollaborationlabs.com (PCL)

For CCIE Service Provider Labs 🔗 www.passsplabs.com (PSPL)

For CCDE Labs 🔗 www.passccdelabs.com (PCDL)

For Chinesedumps 🔗 www.chinesedumps.com (CD)

For VMware Labs 🔗 www.vcixlabs.com (VL)

For CCIE Written Labs 🔗 www.passwritten.com (PW)

For CCIE/JNCIE/VMware RACK RENTALS 🔗 www.ccierack.rentals (CRR)

For more information

contact us at Email:

sales@ccierack.rentals

Skype: ccierack.rentals